



# SuperPad 3

*Full-function Mobile GIS Software to Support Your Field Tasks*

SuperPad is the full-function software designed for mobile GIS and outdoor mapping. After installing SuperPad on mobile devices, field workers can collect, edit, measure, and query spatial data in the field effectively. The validity and usability of the data are thus largely improved.

The whole new SuperPad 3 is upgraded to strengthen efficiency and productivity for your field tasks. More functions are added; the capabilities and performance are also significantly enhanced. Its new user interface is able to use the limited screen space of mobile devices to facilitate users to switch tools among different toolbar groups. More convenience and intuition are brought to your manipulation.

In order to satisfy more user demands, SuperPad 3 includes SuperPad Studio 3, the development framework to customize SuperPad 3. You can easily develop more solutions according to your needs to boost field work effectiveness.



In addition to general field survey, SuperPad 3 can also be applied to diversified areas, such as census, facility management, fire control, and biology research.

**Super  
GIS**

# The features of SuperPad 3

## Brand New User Interface

The interface of SuperPad 3 is redesigned to best utilize the limited screen of mobile devices. The toolbars and buttons are organized in a great layout with sufficient map display space to increase operation convenience. You are able to collect and edit spatial data in a more user-friendly environment.

◀ SuperPad 3 makes you experience the new intuitive, convenient, and user-friendly interface.



## Copious Map Display Content

SuperPad 3 provides users with various symbol choices by means of nearly one hundred types of feature symbols and compasses. The performance of feature and label editing tools is also improved largely. As a result, you can utilize more and nicer symbols along with labels to display the map perfectly.

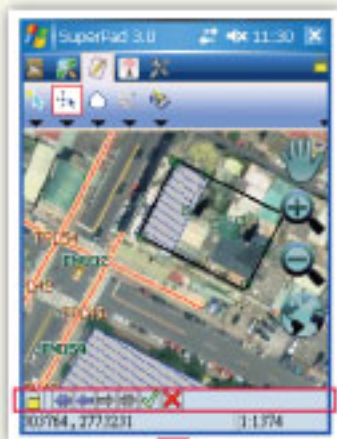


▲ Various symbol and compass types enhance your map display.

## Smart Editing Toolbar

SuperPad 3 provides Smart Editing Toolbar to assist you in feature editing. With numerous editing tools, such as Undo, Redo, and Screen Lock, you are able to view the changes of the features more conveniently. The time for repeatedly writing the data to the file can also be reduced. Editing efficiency is thus greatly raised.

◀ Smart Editing Toolbar effectively facilitate your editing operation.



## Digital Camera Function

SuperPad 3 supports camera function to help you conveniently record what you see by photos. The photo can be automatically linked to the real position where it was taken with the coordinate information. By adding a photo layer on the map window, you can open the photo file with the Hyperlink tool to present the surveyed targets easily.



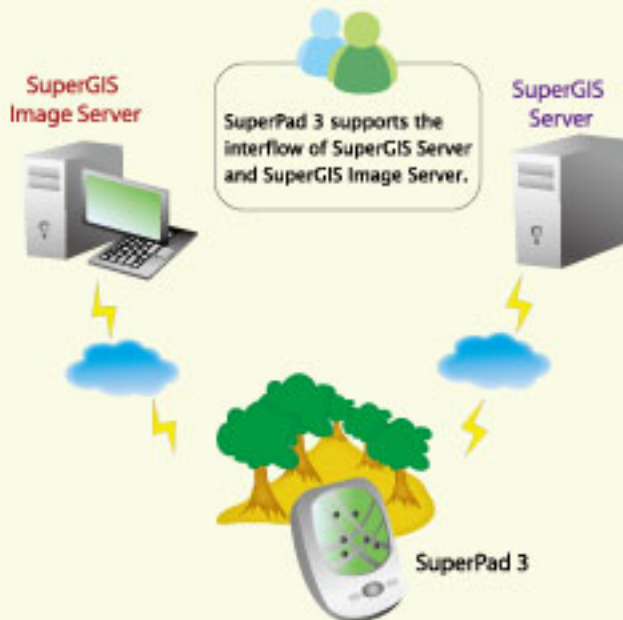
▲ Camera function can easily record and visually display the surveyed features.

## Enhanced GPS support

SuperPad 3 provides various GPS functions, facilitating surveyors to navigate with GPS, add waypoints, etc., to help users recognize the current position and collect spatial data promptly. You can also use visual setting ways to adjust the appearance of GPS Status Bar, so the GPS information can be displayed more clearly.



▲ The new GPS Status Bar shows the details of current GPS status clearly.



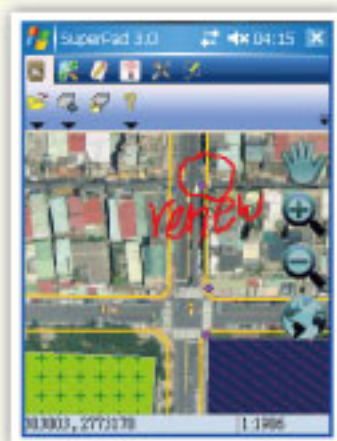
## Perfect Integration with Enterprise Server Software

SuperPad 3 supports the interflow of Enterprise server software. By connecting to SuperGIS Server, you can display and query data online. Also, you can download large quantities of image data from SuperGIS Image Server as display background.

Consequently, field-workers can obtain the data via the Internet to increase work performance. The problems arisen from files saved in different files or formats by different departments can be solved, too. This centralization way can ensure data accuracy and consistency.

## Brand New Core Component

Using SuperGIS Mobile Engine 3 as the development core, SuperPad 3 can be run on any mobile devices supporting Microsoft .NET CF 2.0 SP2 or higher. The compatibility between software and hardware is raised and the operating platform of SuperPad 3 is extended. Additionally, the highly flexible structure enables you to develop various extensions. SuperPad 3 can therefore be applied to more fields.



▲ The Sketch Labeling increases operation efficiency and data collection convenience for you.

## Multiple Customized Extensions

SuperPad 3 provides multiple built-in extensions, including Advanced Attribute Editing, Sketch Labeling, Bird View, Network Tool, Fixed Zoom, and Internet Toolbar, to fulfill extensive user requests. The original codes of these extensions are also offered as sample references for you to develop more required functions.

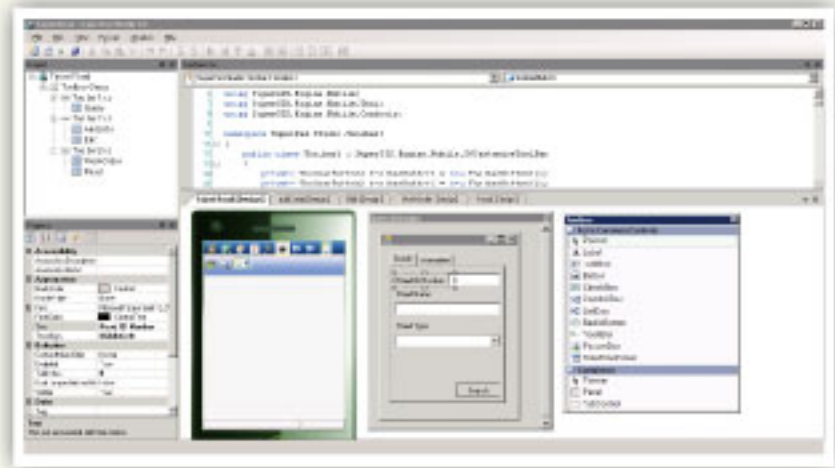
# SuperPad Studio 3

## The Development Framework to customize SuperPad 3

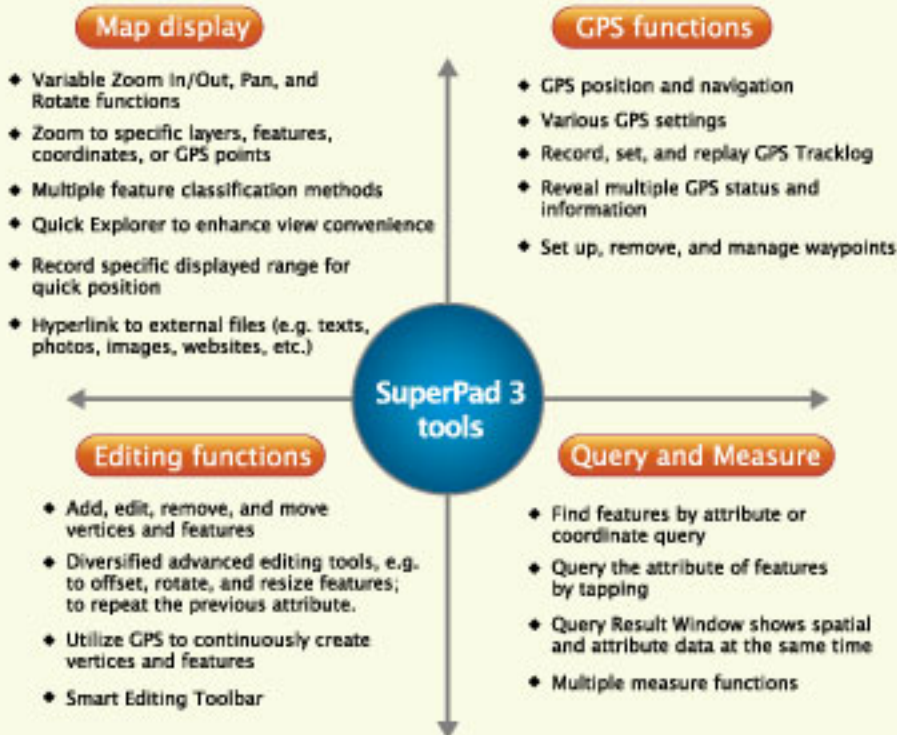
SuperPad Studio 3 employs the style of Visual Studio 2008. The simple and intuitive user interface, plus 3 operation panels (i.e. Project Explorer, Toolbox, and Property Panel), completely reveal the detailed information during the developing process. In addition, the "what you see is what you get" design process exactly displays the outcome of the customization process. This allows developers to examine the customization results clearly.

SuperPad Studio 3 consists of the object library of SuperGIS Mobile Engine 3, so developers can design powerful functions effortlessly by means of numerous GIS objects. The easy, convenient, and intuitive developing process along with the included objects and events help developers automatically produce necessary codes.

With only a few settings, programmers can customize required GIS tools easily. Experienced developers can even expand more advanced functions with VB, NET and C# programming languages. The effectiveness and productivity of your field work can therefore be increased significantly.



▲ SuperPad Studio 3 can customize SuperPad 3 for both individuals and organizations.



### Supported Data Formats

- Feature layers : GEO, SHP, DXF
- Raster layers : SGR, BMP, GIF, PNG, MrSID, ECW, LAN, TIFF, JPG, JPEG2000

### System Requirements

#### Pocket PC

##### Operating system

- Pocket PC 2003
- Pocket PC 2003 Second Edition
- Windows Mobile 5.X/6.X
- Windows CE 4.2/5.0

##### Supported CPU Chips: ARM based, e.g.

- Intel (StrongARM, XScale)
- Intel PXA270
- Samsung S3C
- Texas Instruments (OMAP)
- Atmel

#### PC

- Operating system : Windows 2000/XP/2003/Vista/7

#### Synchronization environment

- Microsoft ActiveSync 4.2 or above
- Windows Mobile Device Centre 6.1 or above (Applicable to Microsoft Vista System or above)

**SuperGeo**  
GIS Software & Solution

8F, No. 217, Sec. 3, Nanjing East Road  
Taipei 104  
Taiwan, R.O.C.

[www.supergeotek.com](http://www.supergeotek.com)  
[staff@supergeotek.com](mailto:staff@supergeotek.com)

Phone: +886-2-25467700

Fax: +886-2-25450167