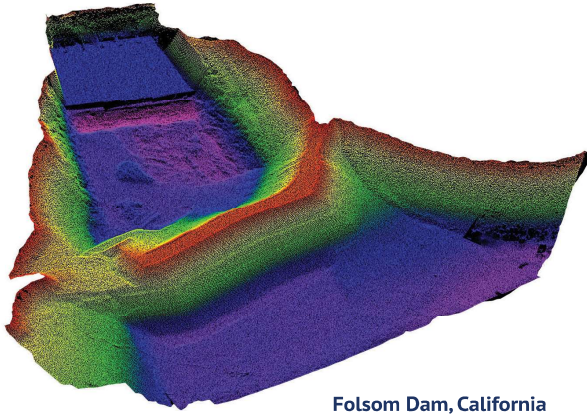


HydroLite-MB™

Portable Integrated Multibeam System

Seafloor™



Folsom Dam, California

ABOUT

The HydroLite-MB™ is a portable, turnkey, integrated multibeam system, scalable to meet individual performance and budget requirements. With kits ranging from entry to workhorse and professional levels, Seafloor Systems can provide a solution ranging from low to ultra-high resolution maintaining productivity and performance.

Set-up of the HydroLite is quick and easily fitted to virtually any vessel. With fixed, measured offsets, installations are constant, reliable and repeatable, thereby reducing risks from human error.



The HydroLite-MB can be adapted to any small survey vessel

HydroLite-MB Default Components

- Multibeam Sonar
- Mounting Pole with fixed position IMU plate and fixed GPS antenna mast
- Sound Velocity Probe
- Sound Velocity Profiler
- Multibeam Data Collection and Processing Software
- Training



PicoMBES
Multibeam Echosounder



SeaBat T20-P Dual Head
Multibeam Echosounder



SeaBat T50-P
Multibeam Echosounder

Each system is pre-configured and pre-calibrated on its mounting frame. The configuration includes:

- ▶ Shallow water multibeam echosounder
- ▶ Inertial navigation system for heave, pitch, roll, heading and positioning
- ▶ Sound Velocity Probe
- ▶ Portable Mounting Pole
- ▶ On-site operational training (upon request)

Combined with the software for survey planning, data collection, patch test calibration and data processing, the package offers everything required to conduct, collect and analyze important high-resolution multibeam survey data.

Seafloor Systems, Incorporated
4415 Commodity Way
Shingle Springs, CA 95682 | USA

HydroLite-MB™

Portable Integrated Multibeam System

SONAR

Frequency: 190 kHz to 420 kHz

Swath: 120° to 210°

Bottom Coverage Per Swath: 3.5xWD to >20xWD

Beam Angle, Along Track: 1.5° to 0.5°

Resolution: 36 mm to 6 mm

Number of Beams: 10-1024

Depth Ranges: 0.5m to 600m

Power: 12W to 300W

12VDC to 24 VDC

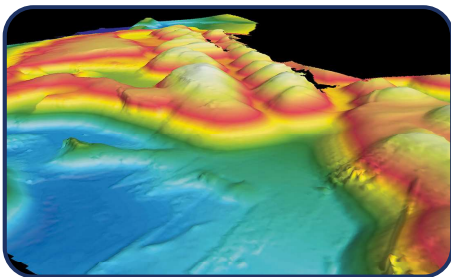
110-230 VAC

Weight: Sonar Head - 3 kg to 14 kg

Size: Sonar Head - (200 mm x 170 mm) to (460 mm x 280 mm)

SONAR OPTIONS

- ▶ Dual Head
- ▶ Roll Stabilization
- ▶ Swath Steering
- ▶ Head Tilt
- ▶ Frequency Modulation
- ▶ Adaptive Gates
- ▶ Sidescan Output
- ▶ Snippets Backscatter Output
- ▶ Water Column Output
- ▶ MultiDetect (multiple bottom detections per beam for information on items in the water column)
- ▶ Splashproof or RackMount Processor
- ▶ Integrated INS



Survey data from a SeaBat T50-P Multibeam Echosounder.

INERTIAL NAVIGATION SYSTEM

Positioning: 2 m to 8 mm

Roll/Pitch: 0.05° to 0.01°

Heading: 0.06° to 0.01°

Heave: 5 cm to 2 cm

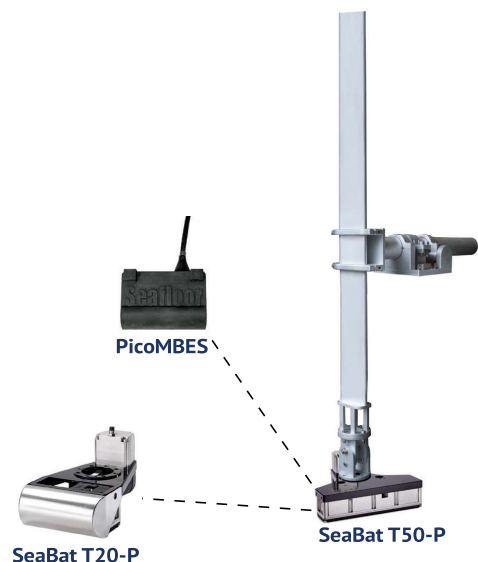
True Heave

RTK

EQUIPMENT & SOFTWARE OPTIONS

- ▶ PC or Laptop
- ▶ Head-Tilt Adaptor (15,30,45)
- ▶ Hydrographic Data Collection and Processing SW
- ▶ Onsite Installation and Training
- ▶ Extended Warranties
- ▶ Cube Editing
- ▶ Bottom Classification Capability
- ▶ Post Kinematic Aided Inertial Post Processing SW

Seafloor's HydroLite-MB Portable Integrated Multibeam System is adaptable to fit a variety of components needed to complete your survey.



Seafloor™

info@seafloorsystems.com | www.seafloorsystems.com