

SHAR 赛尔



Efficient Drone Surveying

Oblique Photogrammetry with No GCP Used

Products

SHARE 102S Series



Model No.	SHARE 102S	PSDK 102S*	SHARE 102S Pro
Pixels / Lens	24.3MP	24.3MP	24.3MP
CNC housing	√	√	√
OLED screen	√	√	√
Independent POS data	√	√	√
J30J Port	√		√
SkyPort		√	√
Compatibility	VTOL, multi rotor	DJI M210, M300	DJI M210, M300, M600, VTOL, multi rotor

■ 120MP in total

■ $\leq 650\text{g}$

■ 35mm lens

■ APS - C

SHARE 赛尔

Products

SHARE 102S Series - Parameters



QTY of Lens	5 pcs	Material	CNC aluminum alloy
Focal Length	35 mm	Size	140 x140 x 80 mm
Effective Pixels	24.3MP, total pixels≥120MP	Weight	≤ 650 g
Sensor Size	APS-C (23.5mm x 15.6mm)	Data Reading	USB3.0 Type-C
Lens Angle	45 degree	Data Preprocessing	SHARE Data Manager
Exposure Interval	≥0.8 s	Real-time Image Transmission	PSDK Supported
Storage	1280 GB	Real-time Kinematic	Supported
Power Supply	SkyPort / J30J	Intelligent Temperature Control	Supported
Power On / Off	Auto On / Off	OLED	Supported
Operating Temperature	-10℃~50℃	One Key Reset / Repaire	Supported
Humidity	95%	Firmware Upgraded	Upgrade online

Products

SHARE 202S Series



Model No.	SHARE 202S	SHARE 202S Pro
Pixels / Lens	42.4MP	42.4MP
CNC housing	✓	✓
OLED screen	✓	✓
Independent POS data	✓	✓
J30J Port	✓	✓
SkyPort		✓
Compatibility	VTOL, multi rotor	DJI M210, M300, M600, VTOL, multi rotor

- 210MP in total
- $\geq 1000g$
- 56mm + 40mm lens
- Full Frame

Products

SHARE 202S Series - Parameters



QTY of Lens	5 pcs	Material	CNC aluminum alloy
Focal Length	56 mm x 4pcs 40 mm x 1pcs	Size	160 x160 x 105 mm
Effective Pixels	42.4MP, total pixels≥210MP	Weight	≥ 1000 g
Sensor Size	Full Frame (35.9 mm x 24mm)	Data Reading	USB3.0 Type-C
Lens Angle	45 degree	Data Preprocessing	SHARE Data Manager
Exposure Interval	≥1.2 s	Real-time Image Transmission	PSDK Supported
Storage	1280 GB	Real-time Kinematic	Supported
Power Supply	SkyPort / J30J	Intelligent Temperature Control	Supported
Power On / Off	Auto On / Off	OLED	Supported
Operating Temperature	-10°C~50°C	One Key Reset / Repaire	Supported
Humidity	95%	Firmware Upgraded	Upgrade online

Products

SHARE 303S Pro - Parameters



QTY of Lens	5 pcs	Material	CNC aluminum alloy
Focal Length	56 mm x 4pcs 40 mm x 1pcs	Size	200 x200 x 125 mm
Effective Pixels	61.0MP, total pixels≥305MP	Weight	≥ 1400 g
Sensor Size	Full Frame (35.7 mm x 23.8mm)	Data Reading	USB3.0 Type-C
Lens Angle	45 degree	Data Preprocessing	SHARE Data Manager
Exposure Interval	≥1.2 s	Real-time Image Transmission	PSDK Supported
Storage	1280 GB	Real-time Kinematic	Supported
Power Supply	SkyPort / J30J	Intelligent Temperature Control	Supported
Power On / Off	Auto On / Off	OLED	Supported
Operating Temperature	-10°C~50°C	One Key Reset / Repaire	Supported
Humidity	95%	Firmware Upgraded	Upgrade online

Products

SHARE 6100 Series



Model No.	6100	6100 Pro	6100 X-port
Pixels / Lens	61.0MP	61.0MP	61.0MP
CNC housing	√	√	√
OLED screen			
Independent POS data	√	√	√
J30J Port		√	√
SkyPort	√	√	√
Compatibility	DJI M210, M300	DJI M210, M300, M600, VTOL, multi rotor	DJI M210, M300, M600,

- 61.0MP in total
- ≤ 360 g
- 40mm lens
- Full Frame

Products

SHARE 6100 Series - Parameters

QTY of Lens	1 pcs	Material	CNC aluminum alloy
Focal Length	40mmX1	Size	136x76 x 61mm
Effective Pixels	61.0MP	Weight	≥ 360 g
Sensor Size	Full Frame (35.7 mm x 23.8mm)	Data Reading	USB3.0 Type-C
Lens Angle	Orthographic	Data Preprocessing	SHARE Data Manager
Exposure Interval	≥1.2 s	Real-time Image Transmission	PSDK Supported
Storage	256 GB	Real-time Kinematic	Supported
Power Supply	SkyPort	Intelligent Temperature Control	Supported
Power On / Off	Auto On / Off	OLED	N/A
Operating Temperature	-10°C~50°C	One Key Reset / Repaire	Supported
Humidity	95%	Firmware Upgraded	Upgrade online

Products

- Efficient

Using 5-lens design makes camera can acquire bigger area than traditional way during same flying time.



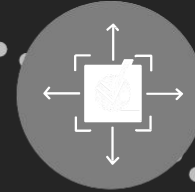
- Simple processing



Used with SHARE Data Manager - data preprocessing software, one key to copy / clean up data.

- High accuracy

Independent POS data in each cameras makes the RTK/PPK information accuracy in pictures under $\pm 1\text{cm}$.



- High compatibility



With high compatibility, cameras can be mounted on VTOL, multi rotor, DJI M210 RTK, M300 RTK and M600.

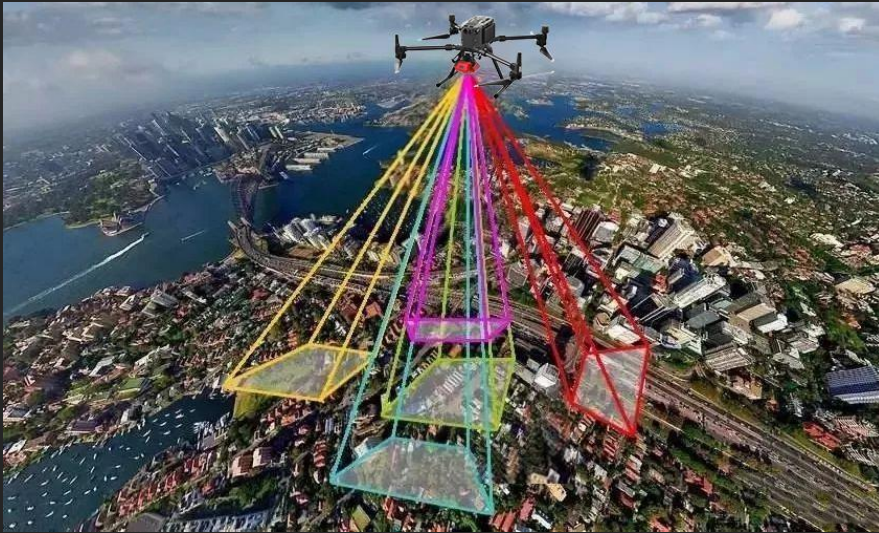


Efficient Drone Surveying

- About Us
- Products
- Applications
- Case Study
- Workflow

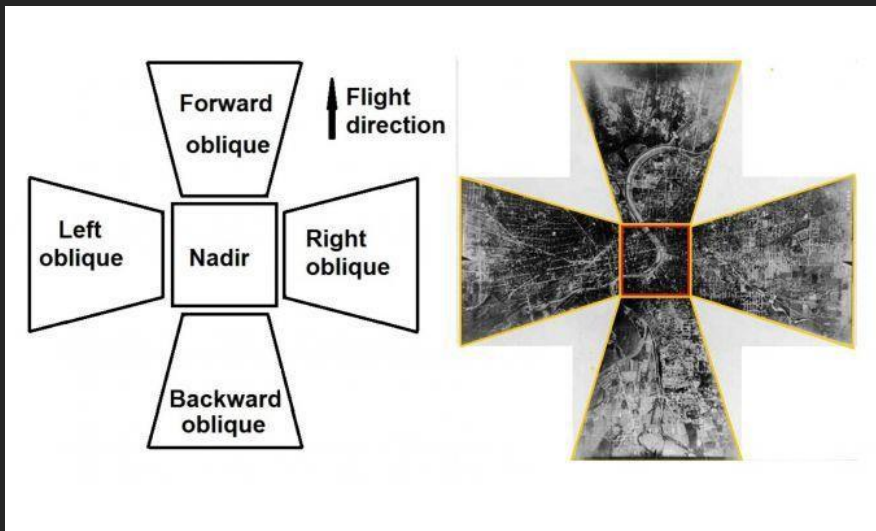


Applications



About Oblique Photogrammetry

- Oblique image is the image captured by aerial oblique camera. Oblique photogrammetry technology is a new high-tech technology developed in the international mapping & remote sensing industry.
- Oblique photogrammetry captures images from orthogonal and 4 tilted directions through multiple sensors placed on a flying platform. The process of generating 3D models using oblique photogrammetry is oblique photogrammetry modeling.



Aircraft

DJI Drone

Multi rotor

VTOL



SHARE 202S

SHARE 102S



SHARE 202 Pro

SHARE 102S Pro

More than efficient

Oblique Photogrammetry Solution



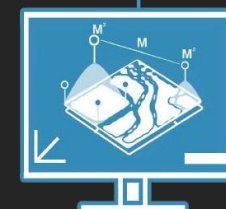
Data Processing
Software

..... Data Preprocessing
Share Data Manager



3D Modeling

DJI Terra
Smart 3D
Context Capture



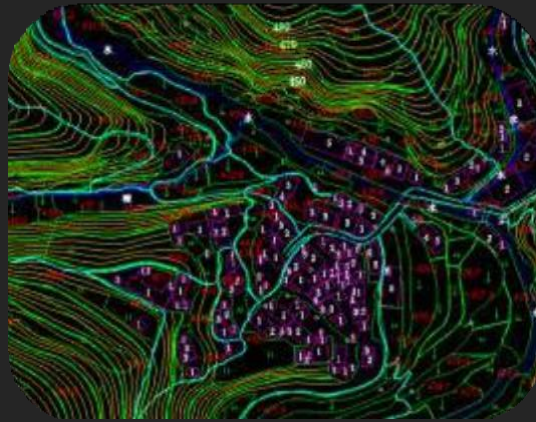
Data Analyzing

SHAR 赛尔

Applications



Cadastral Surveying
& Mapping



Topographic
Surveying



Smart City



Construction



Public Safety



Emergency Command



River Management



Mining

Case Study

M300 RTK + PSDK 102S V2 Oblique Photogrammetry Solution

1:500 with no GCP used, one day mapping area up to **5.3 km²**

According to 6hrs operation / day, single mapping area, 80% x 70% to calculate *

Applicable scene (with no GCP used)	GSD (cm)	Speed (m/s)	Height (m)	Area / flights (km ²)	Effective area / day (km ²)
Cadastral surveying (Plane 5cm, elevation 10cm)	1.5	11.9	96	0.35	5.3
Cadastral surveying (Plane 7.5cm, elevation 15cm)	3	15	192	0.72	12.7
Cadastral surveying (Plane 10cm, elevation 20cm)	5	15	320	0.85	19.2

*The calculation of the effective area takes into account the outward expansion of the equal flight height. The calculated value of the single measurement area may be lower than the actual measurement value.

Efficient Drone Surveying

- About Us
- Products
- Applications
- Case Study
- Workflow



Workflow



Pre-surveying before flight



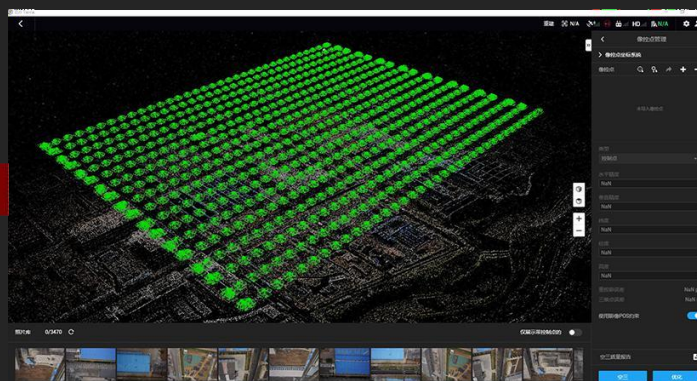
Set checkpoints



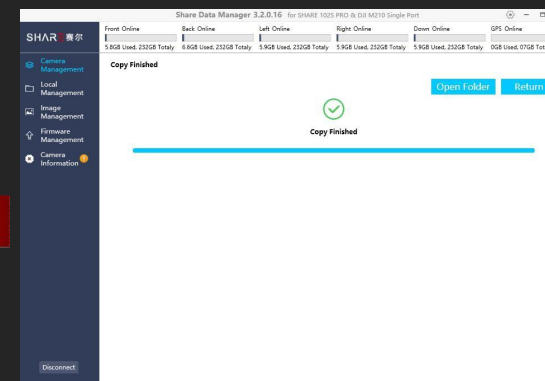
Create routes, flight operation, take photo



3D model reconstruction



Import photos to DJI Terra, run aerial triangulation calculation

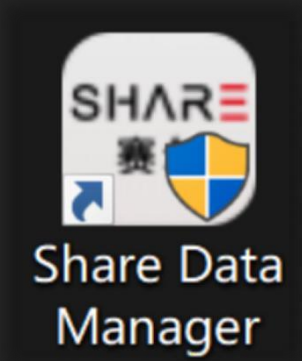


Use Share Data Manager to pre-process data

SHAR 赛尔

Workflow

- About Share Data Manager



Share Data Manager is an intelligent software developed by SHARE UAV to solve the problem of camera-computer interaction. Only **THREE** steps for pre-processing all data.



One-Key
Copy Data



One-Key
Rename



One-Key
Create Engineering
Documents



One-Key
Reset Camera



Official website



Youtube



Facebook

SHAR3 赛尔